



INNOVATIVE DRILLING & TOOL SOLUTIONS

[www.armac.co.uk](http://www.armac.co.uk)

# Plumbing

The convenient, compact and clever solutions to your wrench and hand tool needs

Complete Heating Installation with PHI Wrench Set



Easy Tap Access with Jaw Dropper



Pipe Chamfering Tools



Single Handed Operation with Grip Fast Water Pump Pliers



No Tool Adjustment with Lockjaw Wrench





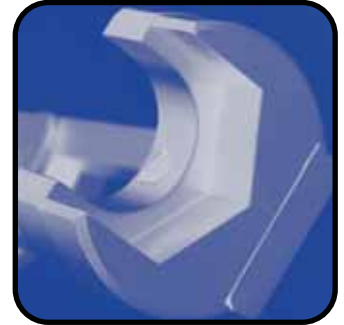
# Plumbing

Innovative Tool Solutions

Introducing the Innovative Plumbing Tool Range from Armeg.

A **comprehensive** range of **plumbing tools** that cover a range of applications.

Products incorporate **innovative designs** to complete the most difficult and awkward of applications with ease.





# Jaw Dropper

Easy Tap Access

For tightening taps without isolating the water supply

The Jaw Dropper set contains a basin and bath wrench. Different jaws at either end of each wrench cover a wide range of nut sizes. Slim design ensures maximum accessibility.

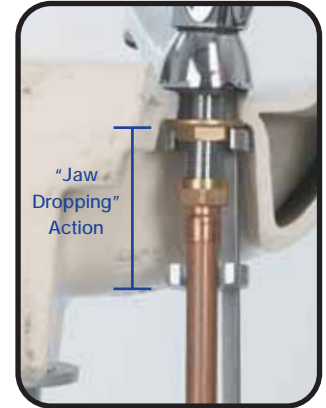


**Size and Description**

**Part No.**

Jaw Dropper Set

DSPSETJD1



# PHI Wrench's

Plumbing and Heating Installation

Isolator valve & boiler installation plus complete radiator dressing

The 5 piece PHI set contains an isolator valve wrench, radiator wrench, boiler wrench, adjustable 24mm wrench & a bleed key.



**Size and Description**

**Part No.**

PHI Wrench Set

DSPSETPHI

Isolator Valve Wrench

DSPIVGW

Radiator Wrench

DSPRADW

Combi Boiler & Radiator Wrench

DSPCBW

24mm x 6" Adjustable Wrench

DSP24MMAW



**GRIP FAST**

# Grip Fast

One Handed Water Pump Pliers

Automatically Adjust to Any Size

Available in 3 different sizes, GRIP FAST is the latest innovation in water pump pliers. They automatically adjust to the required size with only having to use one hand.



Size and Description	Part No.
Grip Fast 7" (max jaw size 25mm)	DGF07WPP
Grip Fast 10" (max jaw size 32mm)	DGF10WPP
Grip Fast 12" (max jaw size 38mm)	DGF12WPP



**LOCKJAW™**

# Lock Jaw

Self Adjusting Locking Pliers

Automatically Locks to Any Size

Lock Jaws patented locking mechanism allows the jaws to automatically adjust to any size object for simple one handed operation.



Size and Description	Part No.
Lock Jaw 6" (max jaw size 32mm)	DLJ6J
Lock Jaw 10" (max jaw size 47mm)	DLJ10J
Lock Jaw 7" Needle Nose (max jaw size 51mm)	DLJ7NN
Lock Jaw 7" C Clamp	DLJ7CC
Lock Jaw 3 Piece Set (6", 10" & 7" needle nose)	DLJSET001



# Pipe Chamfering

For Chamfering Waste Pipes in Seconds

Waste Pipe Sizes 32 to 41mm (1-1/4" & 1-1/2")

- The innovative quick and easy solution to small plastic waste pipe chamfering.
- The PCT can be used on the outer and inner part of the pipe.



**Size and Description**

Waste Pipe Chamfering Tool

**Part No.**

DSPSPDCT

**INNOVATIVE  
HAND HELD**

**HARDENED CUTTING EDGE**

**COMPACT  
EASY TO USE**



# Pipe Chamfering

For Chamfering Soil Pipes in Seconds

For Standard Soil Pipe Size 110mm

Using a standard holesaw adaptor the soil pipe chamfering tool can be used in a 3 jaw chuck. The carbide grit section chamfers your pipe in seconds and also provides excellent tool durability.



**Size and Description**

Soil Pipe Chamfering Tool

**Part No.**

DSPLDPCT

Hexagon Soil Pipe Adaptor

DSPLDHEX

SDS Plus Soil Pipe Adaptor

DSPLSDS

**CARBIDE GRIT**



**INNOVATIVE  
COMPACT  
EASY TO USE**



## Drilling

**SDS Plus Hammer Drill Bits** - Premium and standard range.

**SDS Max Hammer Drill Bits** - Single tip & cross head design.

**SDS Plus Points & Chisels** - Mortar rake chisel, Brick removing chisel, Tile removing chisel, Hard material chisel.

**R1-Rebar** - The solution to drilling rebar.

**Professional and Standard Masonry Drill Bits**

**Core Drilling** - Hi-speed masonry, Professional masonry, Dry diamond & Extra long high speed masonry core drills. Full range of accessories available.

**Wood Drilling** - Wood Beaver next generation wood drill. Flat wood bit, SDS Plus and Hexagon wood augers.

**Metal Drilling** - LDX metal the ultimate solution to drilling thick and thin metal. HSS flute ground split point, HSS long series, Blacksmith Drills & Holesaws.



## Electrical

**Adjustable Hole Cutter**

**Electrical Box Sinker** - The original EBS square hole drilling system now including a dust collection unit.

**Channelling Chisels** - Run accurate channels in seconds.

**SDS Plus Scutch Comb Chisel**

**Solid Board Cutter - Carbide** - Drill easy fix access holes in solid boards in under a minute

**Cable Guide** - The multi-functional cable routing tool.

**Cable Guide Drill** - For cavity walls. The one tool solution to cable guiding.



## Tiling

**PTC Soft Tile** - Softer tile drilling.

**PTC Diamond Grit** - Diamond based tile drills for fixing sizes.

**PTC Carbide** - The solution to non-slip instant start-up. Now with bullet design to increase life.

**PTC Diamond** - The solution to durability & extended life.

**PTC Water Delivery** - The solution to water delivery when drilling porcelain.

**Tile Removing Chisel**

**PTC Diamond Blades** - The solution to cutting porcelain & softer tiles.



## Plumbing

**Jaw Dropper** - Access wrench for tightening taps without isolating the water supply.

**PHI Wrench Set** - Plumbing and Heating Installation set for isolator valve installation, complete radiator dressing & boiler installation.

**Grip Fast** - One handed water pump pliers.

**Pipe Chamfering Tool** - For chamfering waste and soil pipes in seconds.

**LOCK JAW** - Self adjusting locking pliers, automatically lock to any size.



**Specials Manufacturing Service**

Items made to your specifications. Contact us for more details.

ARMEG Limited, Callywhite Lane, Dronfield, S18 2XJ, England.

Telephone: +44 (0)1246 411081 Fax: +44 (0)1246 411882 Email: sales@armeg.co.uk [www.armeg.co.uk](http://www.armeg.co.uk)