



INNOVATIVE DRILLING & TOOL SOLUTIONS

www.armeg.co.uk

Electrical

The most comprehensive choice for
Electrical Installation Tool Solutions



Adjustable Hole Cutter



Electrical Box Sinker



Channelling Chisels



Solid Board Cutters



Conduit Installation Range



 MADE IN SHEFFIELD

EBS
ELECTRICAL BOX SINKER
TRI-CUT

CHC

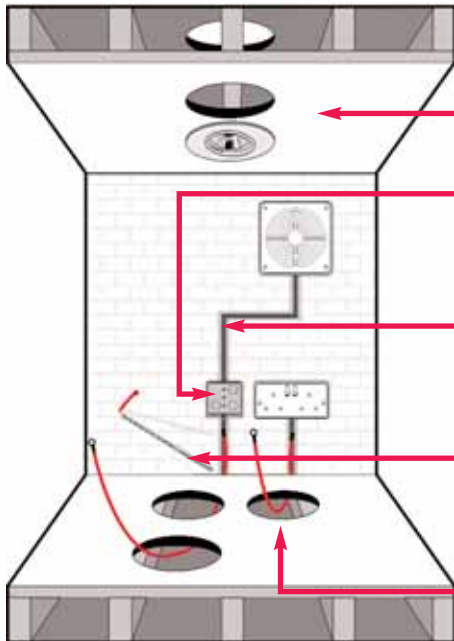
SBC CARBIDE

**CABLE
GUIDE**
DRILL BIT

**PRO-STEP
QUICK-CONE**

Electrical Brochure Contents

The Complete FLOOR TO CEILING Electrical Installation Solution Range



Adjustable Hole Cutter

For cutting access holes in ceilings
Page 2



Electrical Box Sinker

Drill a square hole in the hardest materials
Page 3, 4 & 5



Channelling Chisel

Run quick and accurate channels in seconds
Page 6



Cable Guide & Cable Guide Drill

The multi-functional cable-routing tool
Page 7



Solid Board Cutter

For repeat access in solid floors
Page 8 & 9

2



Dry Diamond Core Drill

5 Piece Dry Diamond Core Drill Set
Page 9



Wood Beaver

The next generation wood drill
Page 10



Conduit Installation Range

For drilling holes in trunking and sheet steel

PRO-STEP

QUICK-CONE™

Page 11

Adjustable Hole Cutter

Adjustable Hole Cutter

Part No: AHC40-200 Spare Blades Part No: AHC40-200SB Spare Pilot Part No: AHC40-200PD



- Impact resistant dust shield for durability
- Twin cutting blades for rapid cutting action & balance
- Adjustable width blades for maximum flexibility
- 40-203mm Cutting Diameter
- Cutting thickness 46mm



- Cutting materials: Veneer, Plywood, Wood Board, Plaster Board & Acrylic

Box Sinking

Drill a Square Hole in Under 2 Minutes



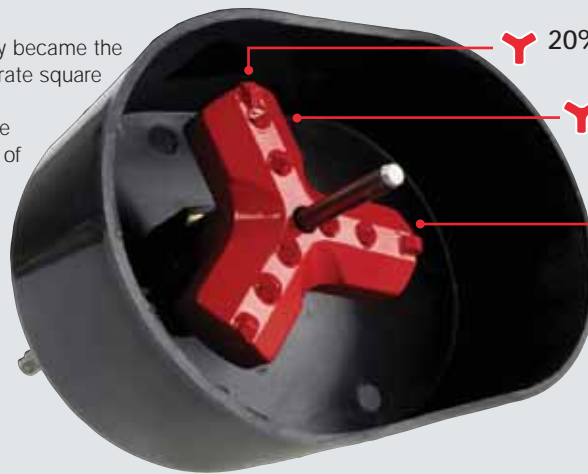
The original EBS Square Hole Drilling System now including Tri-Cut round cutters for maximum performance in hard materials



EBS Tri-Cut

Originally launched in 1999, the Armeg EBS quickly became the industry tool of choice for producing fast and accurate square holes in masonry. Since then literally hundreds of thousands of square holes have been "drilled" saving tens of thousands of hours for electricians and tradesmen.

The all-new EBS Tri-Cut raises the benefits to electricians to an all new level. With a focus on hard materials (concrete & engineering bricks) the new Tri-Cut round cutter, rapidly produces flat backed holes. The smoothest drilling action yet from an EBS design, with 20% less vibration & extended life, ensure the EBS Tri-Cut will continue its rightful place as the tool of choice for drilling square holes.



- Y 20% Reduced Vibration
- Y 50% more carbide for longer life
- Y Dramatically smoother drilling action

3

Single Square Hole



SDS Drill for drilling pilot hole



HARD MATERIAL circular Tri-Cut cutter produces flat back holes in the hardest materials



Solid cast rapid action square hole cutter for soft materials



Rapid action square corner chisel for hard materials



Done, single back box created!

Double Square Hole



SDS Drill for drilling pilot hole



Spacing template for cutting double back box holes



HARD MATERIAL circular Tri-Cut cutter produces flat back holes in the hardest materials



Solid cast rapid action double square cutter for soft materials



Done, double back box created!

Electrical Box Sinking Sets

Drill a Square Hole in Under 2 Minutes



The original EBS Square Hole Drilling System now includes the Tri-Cut round cutter for maximum performance in hard materials



SINGLE BOX SINKER SET

Part No: EBS.TC.SET



COMPLETE BOX SINKING & CHANNELLING SET

Part No: EBS.TCINST.SET



4



Round Cutter with Dust Collection
Not sold as an individual part



Round Cutter with Dust Collection
Not sold as an individual part



Square Cutter
Individual Part Number: EBS.SQUARE.SET



Square Cutter
Individual Part Number: EBS.SQUARE.SET



Double Square Cutter
Individual Part Number:
EBS DOUBLE BOX



Hard Material Chisel
Individual Part Number: EBS.BSC.HM



Hard Material Chisel
Individual Part Number: EBS.BSC.HM



30mm Channelling Chisel
Individual Part Number: G225B4CC30



1 x 6.0mm SDS Plus Hammer Drill Bit
Individual Part Number: S06.OX160



5 x 6.0mm SDS Plus Hammer Drill Bit
5 Piece Part Number: SMP160



Double Hole Spacing Template
Individual Part Number:
RCEBSDLTEMP

Electrical Box Sinking Accessories

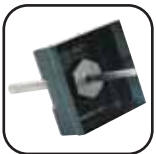
Drill a Square Hole in Under 2 Minutes



The original EBS Square Hole Drilling System now includes the Tri-Cut round cutter for maximum performance in hard materials



EBS Individual Components & Accessories



**EBS Square Cutter c/w
SDS Plus Adaptor**
Part Number: EBS.SQUARE.SET



**EBS Tri-Cut Cutter c/w
SDS Plus Adaptor**
Part Number: EBS.ROUND.SET



**EBS Double Square Cutter c/w
SDS Plus Adaptor**
Part Number: EBS.DOUBLE.BOX



**EBS Tri Cut Cutter c/w
SDS Max Adaptor**
Part Number: EBS.ROUND.SETMX



Double Hole Spacing Template
Part Number: RCEBSDBLTEMP



Hard Material Chisel
Individual Part Number: EBS.BSC.HM



**EBS Dust Collection Shroud and
Drive Adaptor**
Part Number: EBS.DEXT.ASSY



**6.0 x 160mm SDS Plus
Pilot Drill Bit**
Part Number: S06.0X160



**SDS Plus Drive Adaptor for
EBS Square Cutter**
Part Number: DL100B4IG



**SDS Plus Drive Adaptor for
EBS Round Cutter**
Part Number: DL100B4IP



**SDS Plus Drive Adaptor for
EBS Round Cutter c/w
Dust Collection Unit**
Part Number: EBS.DEXT.ADAPT



**SDS Plus Drive Adaptor for
EBS Double Square Cutter**
Part Number: DL100B4IGDB



**SDS Max Drive Adaptor for
EBS Round Cutter**
Individual Part Number: DL210MXR

Channelling Chisels

Run Accurate Channels in Seconds

- Forge steel channelling chisels for rapid channel production
 - For use in soft brick and medium density block
- SDS Plus drive system for machines with roto-stop facility
 - Never allow drill chuck to run dry. Keep applying grease

30mm Channelling Chisel

Part No: G225B4CC30



30mm wide chisel for most channelling applications



55mm Channelling Chisel

Part No: G225B4CC50



55mm wide chisel for use when using capping



20mm Channelling Chisel

Part No: G310B4CCSB



20mm wide chisel for access behind skirting boards and coving



Carbide Tipped Raking Chisel

Part No: 30mm-G30B4CCCT 55mm G55B4CCCT



For use in very hard materials such as engineering brick and concrete



SDS Plus Innovation Chisels

SDS Plus Scutch Comb Chisel

Part No: G150B4SCH



For general electrician's preparation work in masonry

Scutch Comb Part No: SCCO
Scutch Comb 5 Pack Part No. SCCX5



EBS Hard Material Chisel

Part No: EBS.BSC.HM



80mm wide chisel for creating box sinking holes in hard materials. For use in conjunction with EBS Round Cutter

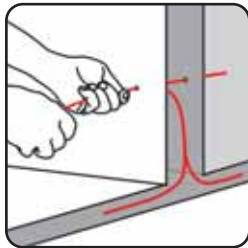
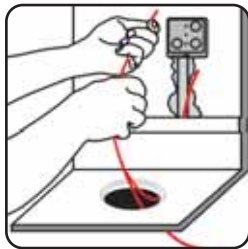




Cable Guide

The multi-functional cable-routing tool

- A quick and easy multi-functional cable-routing tool
- Push or pull cable into place through holes as small as 8mm
 - Range consists of glass fibre rods and connectors
 - Pull strength of 500N is enabled by premium grade connectors and high strength bonding agents



Size and Description	Part No.
Flexi Lead	SBC.CR.FL
Gender Changer	SBC.CR.GC
Mini Eye	SBC.CR.ME
Magnet	SBC.CR.MG
Pair of Bullets	SBC.CR.PB
Push Pull Ring	SBC.CR.PPR
Tuff Hook	SBC.CR.TH
Thread Converter Set	SBC.CRC.SET
Accessory Tube	SBC.CR.AT
1 x Mini Eye, Flexi Lead, Hook & Gender Changer	
Cable Guide Set (10 x 1m Rod Set)	SBC.CR.SET 2
Cable Guide "Mini" Set (10 x 300mm Rod Set)	SBC.CR.SET 4

Note: All sets include an accessory set

7

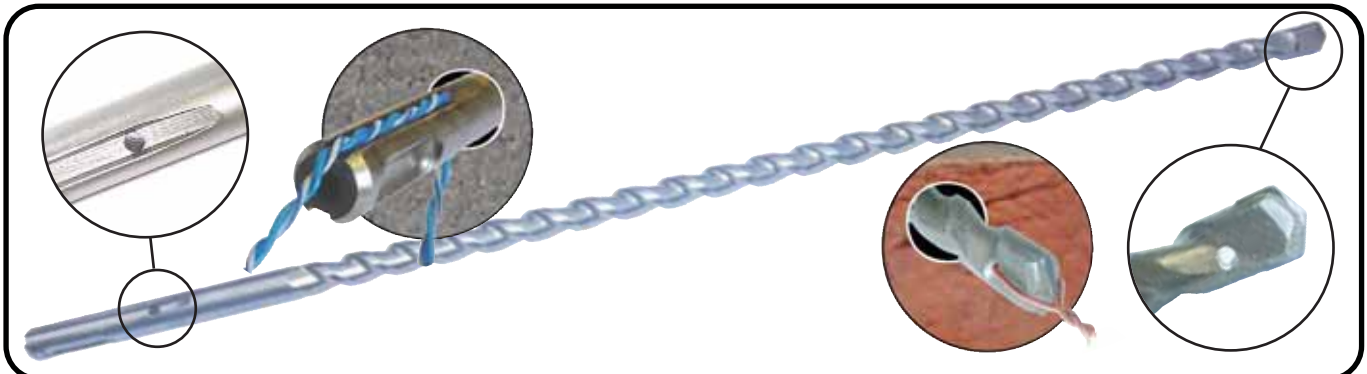


Cable Guide Drill

The one tool solution to guiding cables through cavity walls

The best ideas are the simplest and the Armeg Cable Guide Drill bit is a simple but very effective product. Users can drill a cavity wall in the normal way, connect the cable to the drill bit and pull it through the cavity.

10 x 400mm & 16 x 600mm sizes available



Size and Description	Part No.
10mm x 400mm SDS Plus Cable Guide Drill	CGS10.0X400

Size and Description	Part No.
16mm x 600mm SDS Plus Cable Guide Drill	CGS16.0X600

SBCTM CARBIDE Solid Board Cutter

Drill Easy Fix Access Holes in Solid Boards in Under a Minute

- Carbide teeth give extended tool life
- Rapid cutting of 111mm & 127mm access holes in solid floors
 - No need for time consuming interjoist sawing
 - Solid removable plugs that lie flush with the floor

111mm SBC Complete Set

Part No. SBC111SET



127mm SBC Complete Set

Part No. SBC127SET



8



111mm Carbide Solid Board Cutter
Not sold as an individual part



127mm Carbide Solid Board Cutter
Not sold as an individual part



111mm SBC Plug Cap x 3
Individual Part Number: RPSBC111PLUG



127mm SBC Plug Cap x 3
Individual Part Number: RPSBC127PLUG



Hexagon Adaptor for SBC Cutter
Individual Part Number: SBCHEXAD



Hexagon Adaptor for SBC Cutter
Individual Part Number: SBCHEXAD



SDS Plus Adaptor for SBC Cutter
Individual Part Number: SBCSDSAD



SDS Plus Adaptor for SBC Cutter
Individual Part Number: SBCSDSAD

111mm SBC Plug Set

Part No. SBC111 PLUGSET



127mm SBC Plug Set

Part No. SBC127PLUGSET



111mm Carbide Solid Board Cutter
Not sold as an individual part



127mm Carbide Solid Board Cutter
Not sold as an individual part



111mm SBC Plug Cap x 3
Individual Part Number: RPSBC111PLUG



127mm SBC Plug Cap x 3
Individual Part Number: RPSBC127PLUG

Solid Board Cutter

Drill Easy Fix Access Holes in Solid Boards in Under a Minute

SBC CARBIDE



SBC Individual Components & Accessories



111mm SBC Plug Cap
Individual Part Number: RPSBC111PLUG



127mm SBC Plug Cap
Individual Part Number: RPSBC127PLUG



111mm SBC Plug Cap x 10
Individual Part Number: SBC111PLUGX10



127mm SBC Plug Cap x 10
Individual Part Number: SBC127PLUGX10



Hexagon Adaptor for SBC Cutter
Individual Part Number: SBCHEXAD



SDS Plus Adaptor for SBC Cutter
Individual Part Number: SBCSDSAD



SBC Pilot Drill
Individual Part Number: SBCPILOT

9

Dry Diamond Core Drill

5 Piece Dry Diamond Core Drill Set

Part No. CDD5PCSET



- Premium Dry Diamond Core Drilling Kit with a great range of cores & accessories to cover the majority of venting and draining applications.
- Designed to give rapid clean service entries with virtually no making good required.
- Virtually no break out damage

Set contains: 1 x 127, 117, 65, 52 & 42mm Dry Diamond Core Drill, SDS Plus & Hexagon Adaptor, 200mm Extension, 400mm Pilot Drill, 200mm Guide Rod & Drift Pin.



Wood Beaver

The next generation wood drill

The Wood Beaver's quad-flute and quad-cutting head design sets it apart from other wood drill bits on the market and gives a drilling performance that can't be beaten

- ULTRA CLEAN BREAK THROUGH**
- EXTREME DRILLING COMFORT & BALANCE**
- FASTER DRILLING SPEED**
- MAXIMUM HOLES PER CHARGE**
- RAPID DIAMETER TOOL CHANGE**



Size and Description	Part No.
10.0mm Wood Beaver Drill Bit	WWB10.0T
12.0mm Wood Beaver Drill Bit	WWB12.0T
13.0mm Wood Beaver Drill Bit	WWB13.0T
16.0mm Wood Beaver Drill Bit	WWB16.0T
18.0mm Wood Beaver Drill Bit	WWB18.0T

Size and Description	Part No.
19.0mm Wood Beaver Drill Bit	WWB19.0T
20.0mm Wood Beaver Drill Bit	WWB20.0T
22.0mm Wood Beaver Drill Bit	WWB22.0T
25.0mm Wood Beaver Drill Bit	WWB25.0T
32.0mm Wood Beaver Drill Bit	WWB32.0T

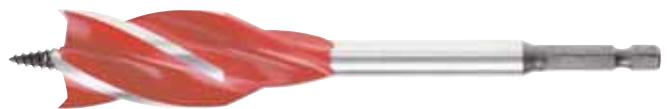
10



Wood Beaver 4 Piece Set

Part No. WWB4PCSET

- Contains 1 x 16, 20, 25 & 32mm



Wood Beaver Stubby Set

Part No. WWB3PCSET120

- 120mm length design ideal for inter-joist drilling
- Contains 1 x 16, 20 & 25mm



Wood Beaver Adaptors & Extensions



1/4" Wood Beaver SDS Plus Drive Adaptor (Fits 10 to 25mm)
Individual Part Number: SDS1/4WB055



7/16" Wood Beaver SDS Plus Drive Adaptor (Fits 32mm)
Individual Part Number: SDS7/16WB090

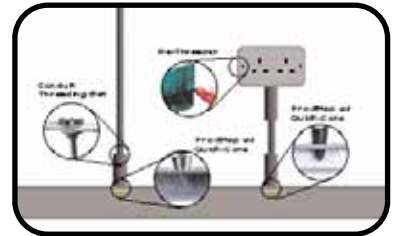


1/4" Wood Beaver Extension Rod 250mm Long (Fits 10 to 25mm)
Individual Part Number: WWB1/4HEX250

Conduit Installation Range

The Solution to Conduit Installation

The new Conduit Installation Range, by Armeg, is the solution range for all Conduit and trunking applications.



PRO-STEP

For the ultimate in consistently accurate holes

- Up to 13 drill diameter steps for **convenience** and multiple hole diameter options
- Laser etched diameter markings allow repeat production of **error free, reliably accurate holes**
- Fully ground body profile for **perfectly round, burr free holes**
- Precision ground, tapered cutting edges allow material **up to 6mm to be drilled**



Size and Description	Part No.
4 - 22mm Step Drill	EMWSD04-22
5 - 35mm Step Drill	EMWSD05-35
16 - 25mm Step Drill	ESD 16-25
16 - 32mm Step Drill	ESD 16-32
12 - 25mm Step Drill	ESDISO 12-25

QUICK-CONE™

The most versatile tool for quick & easy holes

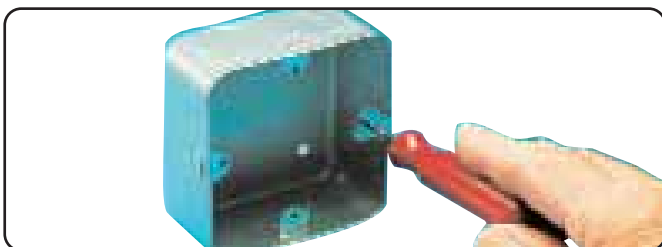
- Uninterrupted, ground cutting edges rapidly produce an infinite range of hole diameters for **ultimate versatility**
- Tapered cone design for easily enlarging holes, perfect for **problem solving** & awkward jobs
- Self centering drilling action provides a quick & easy **trade solution** for metal drilling



Size and Description	Part No.
20 & 25mm Cone Drill	ECD20-25
6 - 20mm Cone Drill	ECD06-20
9.5 - 22.5mm Cone Drill	ECD09.5-22.5
16 - 30.5mm Cone Drill	ECD16-30.5
25 - 40mm Cone Drill	ECD25-40
16 - 25mm Cone Drill	ECD 16-25

RE-THREADER

Quickly & cleanly rethreads



Size and Description	Part No.
3.5mm Re-Threader - Long Reach	EMWRT03.5
3.5mm Re-Threader - Standard Reach	ERT03.5
4.0mm Re-Threader - Standard Reach	ERT04.0

CONDUIT THREADING SET

Rapidly produces accurate threads



Size and Description	Part No.
20 & 25mm Conduit Stock & Die Set	ECSDS20-25

CUTTING COMPOUND

Maintains sharpness & tool life



Size and Description	Part No.
60cc Cutting Compound	ECC002

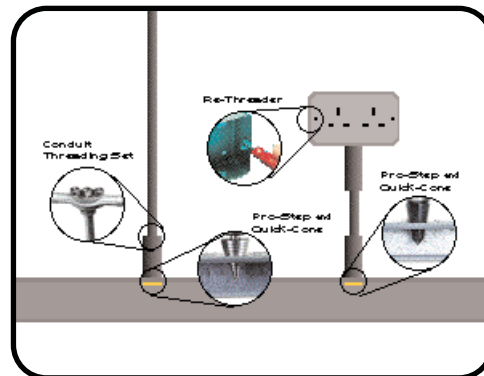


FOR QUALITY
THAT'S
GROUND IN



Conduit Installation Range

The Armeg **PRO-STEP & QUICK-CONE™** represent the highest step in quality manufacturing. Designed in a precision manufacturing process, the drills produce rapid, clean and professional holes for quality conduit installation. With a one-piece HSS construction for extended tool life and neat burr-free holes, the **PRO-STEP & QUICK-CONE™** are a must have for all electrician's.



Tiling



Plumbing



Electrical



General Building/Drilling



Specials Manufacturing Service

Items made to your specifications. Contact us for more details.

ARMEG Limited, Callywhite Lane, Dronfield, S18 2XJ, England.

Telephone: +44 (0)1246 411081 Fax: +44 (0)1246 411882 Email: sales@armeg.co.uk www.armeg.co.uk